

# Googong Township

## Neighbourhood 2

### Landscape and Open Space Development Application

CLIENT: Googong Township Pty Ltd.  
PO Box 1000, Civic Square ACT 2608  
Level 3, 64 Allara Street, Canberra ACT 2600  
T 02 6230 0800  
F 02 6230 0811

Drawing Number	Title
L01	Cover Sheet
L02	Tree Retention Plan
L03	Landscape Masterplan
L04	Staging Plan
L05	Pedestrian and Cycle Network
L06	Entry Context Plan
L07	Old Cooma Road Duplication - Concept Plan and Services Plan
L08	Old Cooma Road Duplication - Typical Section and Entry Signage
L09	Old Cooma Road Duplication - Planting and Landscape Character
L10	Linear Entry Road - Concept Plan
L11	Linear Entry Road - Typical Sections
L12	Linear Entry Road - Planting and Landscape Character
L13	Town Centre Lake - Concept Plan
L14	Town Centre Lake - Levels Plan
L15	Town Centre Lake - Typical Sections
L16	Town Centre Lake - Planting and Landscape Character
L17	Local Park 7 - Concept Plan
L18	Local Park 7 - Planting Schedule and Landscape Character
L19	Local Park 8 - Concept Plan
L20	Local Park 8 - Planting Schedule and Landscape Character
L21	Nangi Pimble - Concept Plan
L22	Nangi Pimble - Planting Schedule and Landscape Character
L23	Local Park 9 - Concept Plan
L24	Local Park 9 - Planting Schedule and Landscape Character
L25	Googong Common and Riparian Corridor - Concept Plan
L26	Googong Common and Riparian Corridor - North
L27	Googong Common and Riparian Corridor - South
L28	Googong Common and Riparian Corridor - Sections
L29	Googong Common and Riparian Corridor - Planting Schedule and Landscape Character
L30	Green Links and Verges - Concept Plan
L31	Old Cooma Road Buffer Planting - Concept Plan
L32	Old Cooma Road - Planting Schedule and Landscape Character
L33	Street Tree Masterplan
L34	Street Tree Planting Schedule - Natvie Trees
L35	Street Tree Planting Schedule - Exotic Trees
L36	Street Tree Planting Schedule - Exotic Trees
L37	Streetscape Understory Species Schedule
L38	Streetscape Understory Species Schedule



Neighbourhood 2

Cover Sheet

AECOM

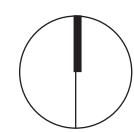
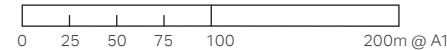
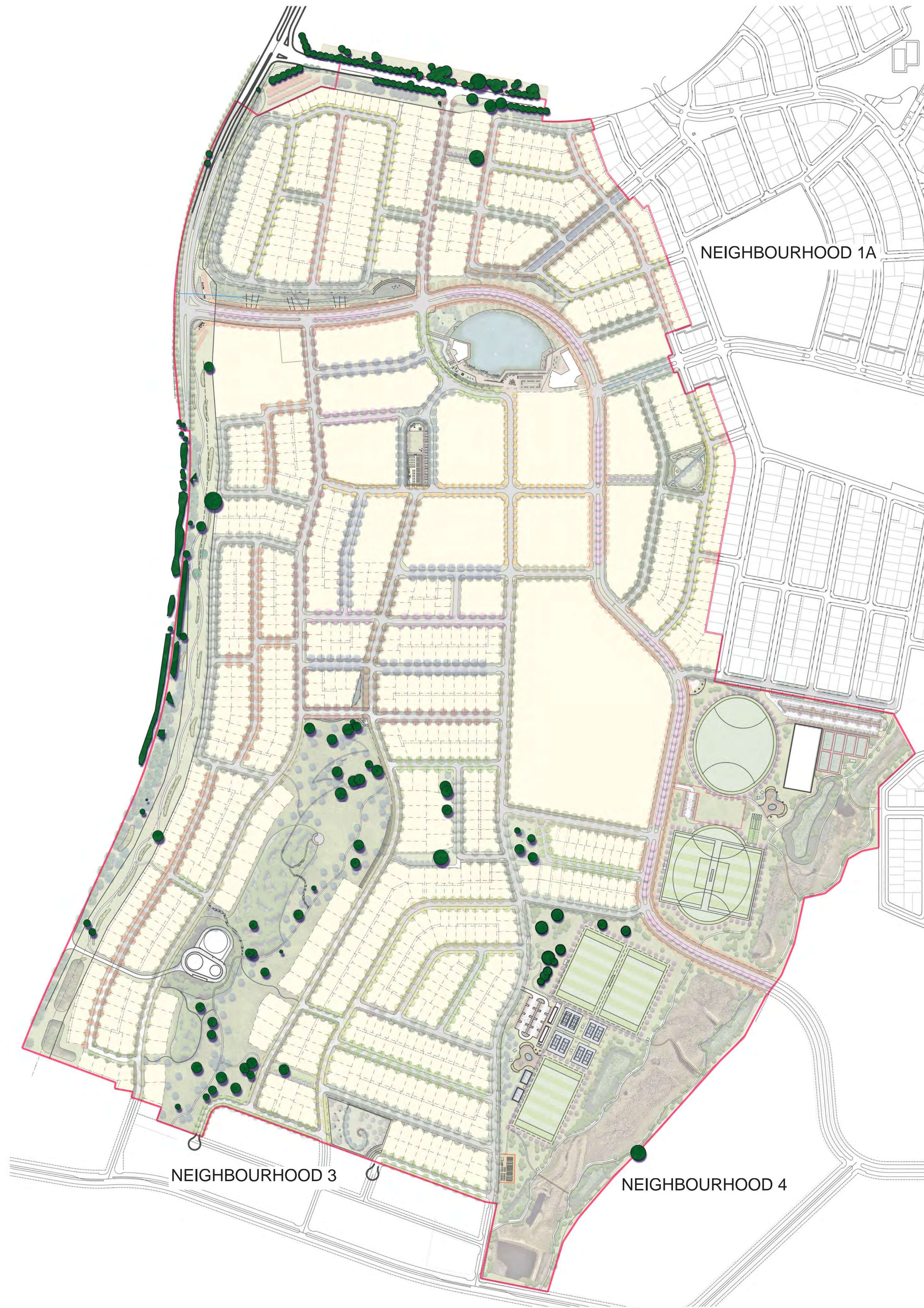
G	Development Application	28.09.17	AJ
F	Development Application	22.03.17	JB
E	Development Application	15.03.17	JB
D	Development Application	20.02.17	JB
C	90% Draft - For Review	25.01.17	JB
B	Draft - For Review	12.01.17	JB
A	Draft - For Review	21.12.16	JB
no.	revision	date	initial

Title Googong Neighbourhood 2  
Development Application

Prepared for Googong Township Pty Ltd  
Prepared by AECOM

Date 28.09.17  
Size A1  
Drawing no. L01  
Scale 1:4,000@A1





Neighbourhood 2

Tree Retention Plan  
Key

 Existing tree to be retained

Design levels will ensure all existing trees identified for retention will be retained

**AECOM**

G	Development Application	28.09.17	AJ
F	Development Application	22.03.17	JB
E	Development Application	15.03.17	JB
D	Development Application	20.02.17	JB
C	90% Draft - For Review	25.01.17	JB
B	Draft - For Review	12.01.17	JB
A	Draft - For Review	21.12.16	JB
no.	revision	date	initial

Title Googong Neighbourhood 2  
Development Application

Prepared for Googong Township Pty Ltd  
Prepared by AECOM

Date 28.09.17  
Size A1  
Drawing no. L02  
Scale 1:4,000@A1





## Neighbourhood 2

### Landscape Master Plan Key

NH2 Boundary	
Edges	
1	Googong Road
2	Old Cooma Road Duplication
3	Old Cooma Road Buffer Planting
Entry	
4	Main Entry
5	Linear Entry Park
Town Centre	
6	Town Centre Lake, Civic Plaza and Neighbourhood Park
7	Town Centre
8	Future School Site
Nangi Pimble	
9	Nangi Pimble
10	Water Reservoir Site
Googong Common	
11	Googong Common North
12	Googong Common South
Local Parks	
13	Local Park 7
14	Local Park 8
15	Local Park 9
16	Widened Verges and Green Links
Playgrounds	
LP	Local playground
NP	Neighbourhood playground
Community Gardens	
C1	Community Garden
C2	Potential Community Garden or BMX track

**AECOM**

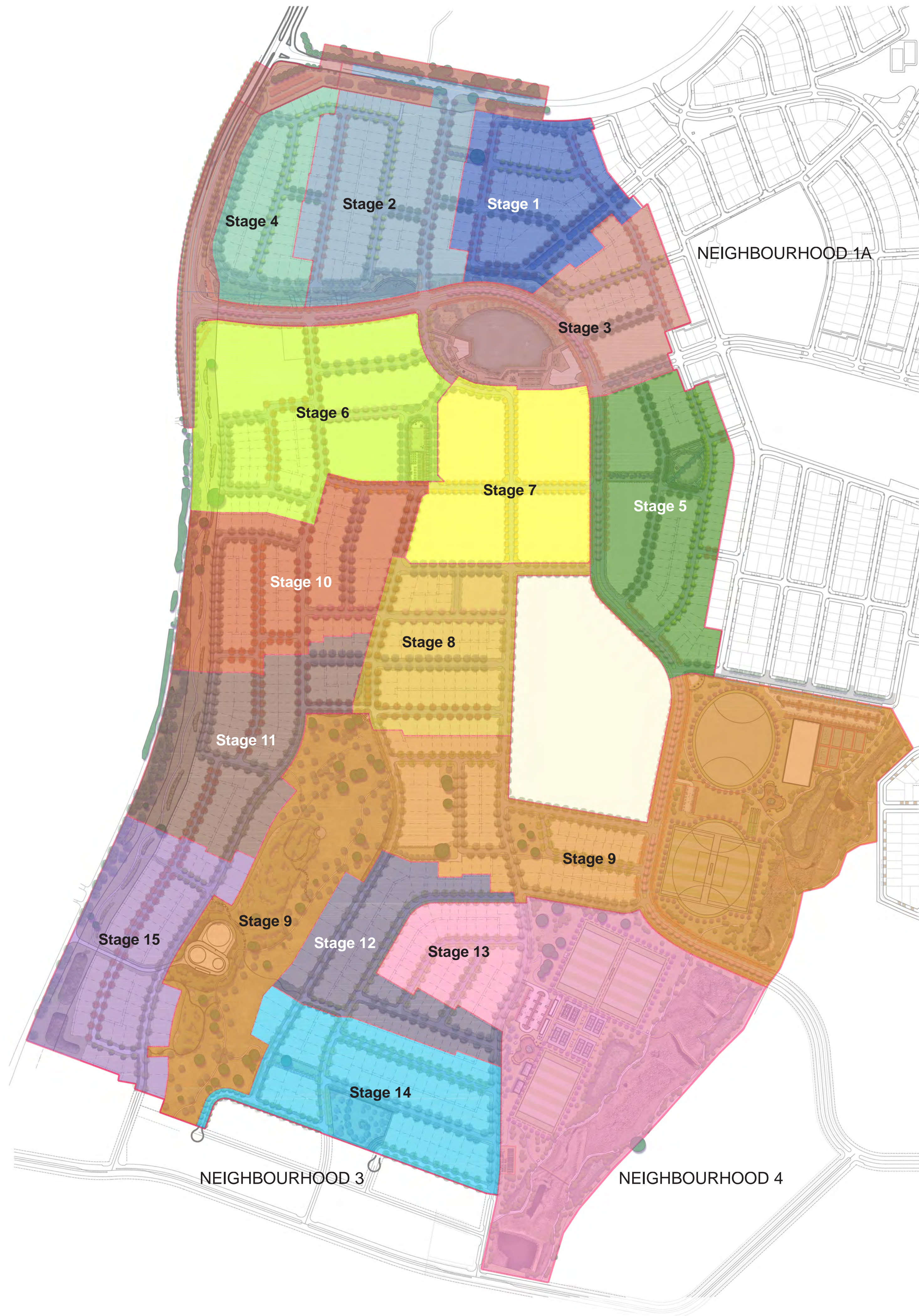
G	Development Application	28.09.17	AJ
F	Development Application	22.03.17	JB
E	Development Application	15.03.17	JB
D	Development Application	20.02.17	JB
C	90% Draft - For Review	25.01.17	JB
B	Draft - For Review	12.01.17	JB
A	Draft - For Review	21.12.16	JB
no.	revision	date	initial

Title	Googong Neighbourhood 2 Development Application
-------	--

Prepared for	Googong Township Pty Ltd
Prepared by	AECOM

Date	28.09.17
Size	A1
Drawing no.	L03
Scale	1:4,000@A1





Neighbourhood 2

Staging Plan

**AECOM**

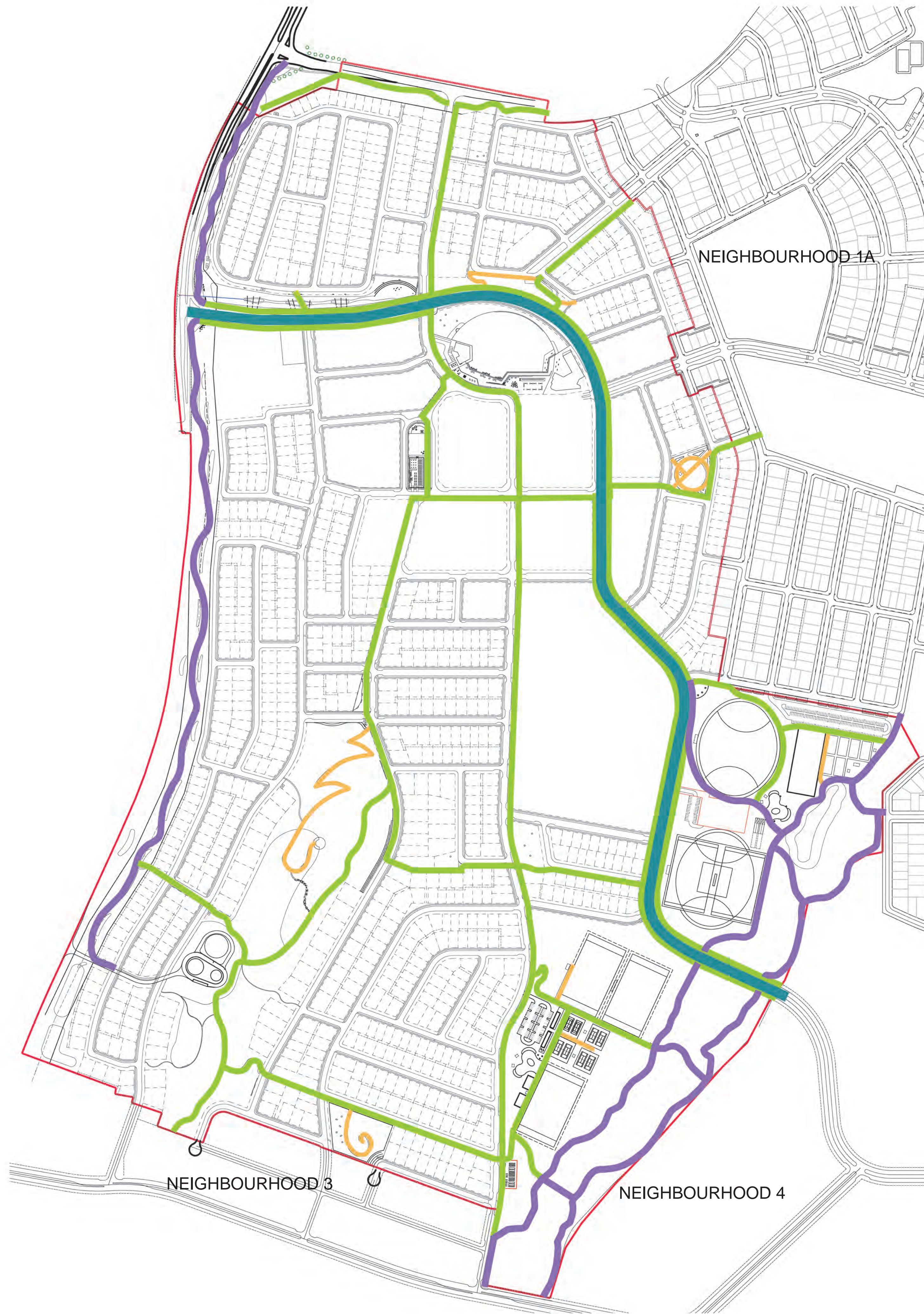
G	Development Application	28.09.17	AJ
F	Development Application	22.03.17	JB
E	Development Application	15.03.17	JB
D	Development Application	20.02.17	JB
C	90% Draft - For Review	25.01.17	JB
B	Draft - For Review	12.01.17	JB
A	Draft - For Review	21.12.16	JB
no.	revision	date	initial

Title                    Googong Neighbourhood 2  
                                 Development Application

Prepared for    Googong Township Pty Ltd  
Prepared by    AECOM

Date                    28.09.17  
Size                    A1  
Drawing no.    L04  
Scale                  1:4,000@A1





## Neighbourhood 2

### Pedestrian and Cycle Network Key

<span style="color: red;">—</span>	NH2 Boundary
<span style="color: blue;">—</span>	Dedicated on road bicycle lane
<span style="color: purple;">—</span>	2.5m wide shared path
<span style="color: green;">—</span>	2.0m wide key path
<span style="color: orange;">—</span>	1.5m wide path



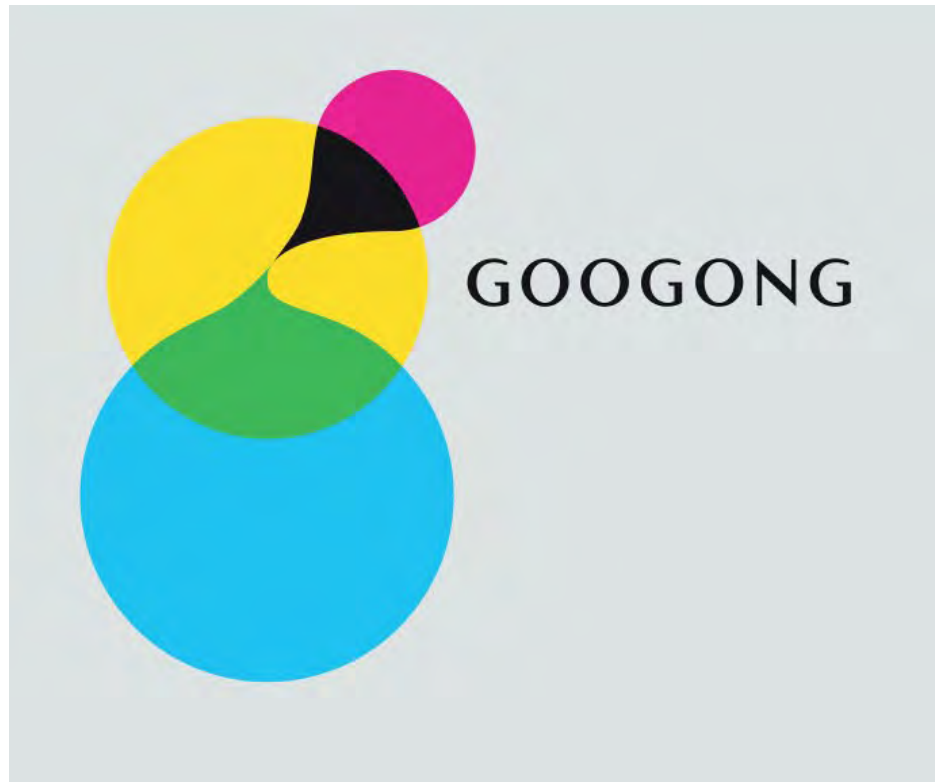
G	Development Application	28.09.17	AJ
F	Development Application	22.03.17	JB
E	Development Application	15.03.17	JB
D	Development Application	20.02.17	JB
C	90% Draft - For Review	25.01.17	JB
B	Draft - For Review	12.01.17	JB
A	Draft - For Review	21.12.16	JB
no.	revision	date	initial

Title	Googong Neighbourhood 2 Development Application
-------	---

Prepared for	Googong Township Pty Ltd
Prepared by	AECOM

Date	28.09.17
Size	A1
Drawing no.	L05
Scale	1:4,000@A1





Neighbourhood 2

Entry Context Plan



**AECOM**

G	Development Application	28.09.17	AJ
F	Development Application	22.03.17	JB
E	Development Application	15.03.17	JB
D	Development Application	20.02.17	JB
C	90% Draft - For Review	25.01.17	JB
B	Draft - For Review	12.01.17	JB
A	Draft - For Review	21.12.16	JB
no.	revision	date	initial

Title Googong Neighbourhood 2  
Development Application

Prepared for Googong Township Pty Ltd  
Prepared by AECOM

Date 28.09.17  
Size A1  
Drawing no. L06  
Scale 1:1,250@A1





Concept Plan



Neighbourhood 2

Old Cooma Road Duplication and Main Entry

Key	
1	Feature entry sign and sculpture
2	Bulb planting
3	Undulating turf mounding
4	Sculpted turf terraces
5	2.5m wide concrete pedestrian share path
6	Hedge screening to lot boundary fence
7	Dryland grass mix with groupings of Eucalyptus polyanthemus
8	Turf edge
9	Overhead high voltage wires
10	Substations - Indicative location
Trees	
T1	Poplar avenue
T2	Groves of Eucalyptus melliodora
T3	Groupings of Eucalyptus polyanthemus to verge
T4	Liquidambar styraciflua as backdrop to entry signage and Googong Road corner
T5	Platanus x acerifolia trees as avenue and to supplement existing



Services Coordination

Key	
	Areas of landscape works within easement subject to approval
1	Hedge planting to edge of easement
2	Signage structures and trees within easement
3	Turf mounding
All other encroachments limited to 2.5m wide concrete paths, grasses and groundcover plantings	



G	Development Application	28.09.17	AJ
F	Development Application	22.03.17	JB
E	Development Application	15.03.17	JB
D	Development Application	20.02.17	JB
C	90% Draft - For Review	25.01.17	JB
B	Draft - For Review	12.01.17	JB
A	Draft - For Review	21.12.16	JB
no.	revision	date	initial

Title	Googong Neighbourhood 2 Development Application
-------	---

Prepared for	Googong Township Pty Ltd
Prepared by	AECOM

Date	28.09.17
Size	A1
Drawing no.	L07
Scale	1:1,000@A1





Neighbourhood 2

Old Cooma Road Duplication  
Typical Section and Entry Signage

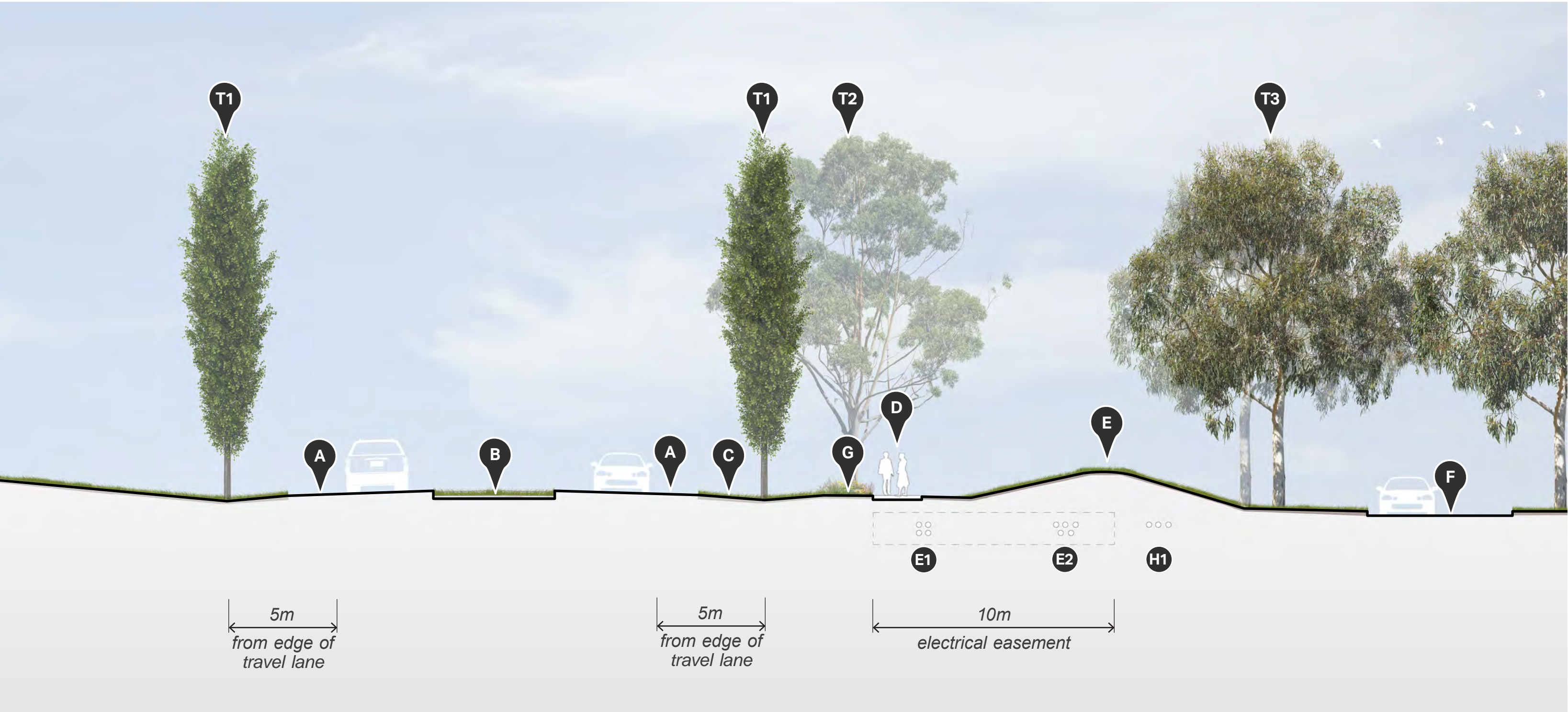
AECOM

G	Development Application	28.09.17	AJ
F	Development Application	22.03.17	JB
E	Development Application	15.03.17	JB
D	Development Application	20.02.17	JB
C	90% Draft - For Review	25.01.17	JB
B	Draft - For Review	12.01.17	JB
A	Draft - For Review	21.12.16	JB
no.	revision	date	initial

Title	Googong Neighbourhood 2 Development Application
-------	--

Prepared for	Googong Township Pty Ltd
Prepared by	AECOM

Date	28.09.17
Size	A1
Drawing no.	L08
Scale	As shown



Typical Section A-A: Old Cooma Road Duplication 1:150



Indicative Imagery - Entry Signage and Sculptural Elements

Key	
A	Old Cooma Road
B	Dryland grass median
C	Dryland grass
D	2.5m share path
E	Grassed mound, 1:4 batter, undulating height (maximum 1.8m)
F	Residential road
G	Ornamental planting between groves of Eucalyptus melliodora
Services	
E1	11Kv underground cable (centre approx 2m from edge of easement)
E2	132Kv underground cable (centre approx 3m from edge of easement)
H1	Hydraulic mains alignment





Neighbourhood 2

Old Cooma Road Duplication  
Planting and Landscape Character

AECOM

G	Development Application	28.09.17	AJ
F	Development Application	22.03.17	JB
E	Development Application	15.03.17	JB
D	Development Application	20.02.17	JB
C	90% Draft - For Review	25.01.17	JB
B	Draft - For Review	12.01.17	JB
A	Draft - For Review	21.12.16	JB
no.	revision	date	initial

Title	Googong Neighbourhood 2 Development Application
-------	--

Prepared for	Googong Township Pty Ltd
Prepared by	AECOM

Date	28.09.17
Size	A1
Drawing no.	L09
Scale	-

Planting Schedule

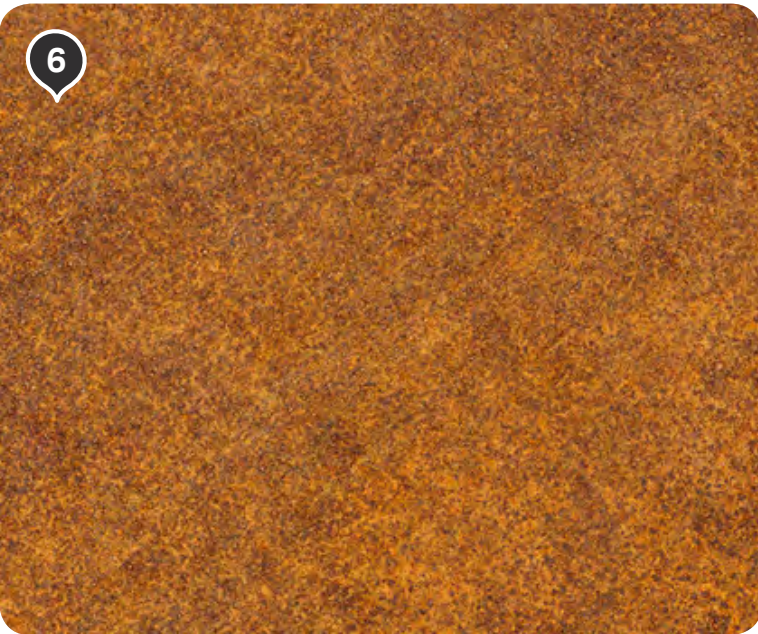
BOTANICAL NAME	COMMON NAME	POT SIZE	MATURE HEIGHT	MATURE SPREAD
Exotic				
Trees				
<i>Liquidambar styraciflua</i> 'Oakville Highlight'	Liquidamber	400L	12	8
<i>Platanus orientalis</i>	London Plane Tree	100L	30	15
<i>Populus simonii</i>	Simons Poplar	200L	15	4
Bulbs				
<i>Jonquil</i> 'Mixed Shades'	Jonquil Mixed Shades	Bulb	0.3	0.2
<i>Narcissus</i> 'Mixed Daffodils'	Daffodil Mixed	Bulb	0.3	0.2
Native				
Trees				
<i>Eucalyptus melliodora</i>	Yellow Box	300mm antispiral	30	15
<i>Eucalyptus polyanthemus</i>	Red Box	300mm antispiral	20	10
Shrubs and groundcovers				
<i>Chrysocephalum apiculatum</i>	Yellow Buttons	Viro tube	0.6	0.5
<i>Leucochrysium albicans</i> var. <i>tricolor</i>	Hoary Sunray (white form)	Viro tube	0.3	0.4
<i>Rhodanthe anthemoides</i>	Chamomile Sunray	Viro tube	0.3	0.6
<i>Rutidosis leiolepis</i>	Monaro Golden Daisy	Viro tube	0.3	0.4
<i>Rutidosis leptorrhynchoides</i>	Button Wrinklewort	Viro tube	0.3	0.4
Grasses				
<i>Calotis glandulosa</i>	Mauve Burr-daisy	Viro tube	0.3	0.4
<i>Dianella revoluta</i>	Blue Flax Lily	Viro tube	0.5	0.5
<i>Stypandra glauca</i>	Nodding Blue Lily	Viro tube	0.3	0.4
Dryland grass mix (DLG2 - see below)				
Turf				
Canberra Blend	Turf		N/A	N/A
Standard Dryland Grass	Turf/Verge	Seed	N/A	N/A

BOTANICAL NAME	COMMON NAME	FORM	% MIX	Kg/ha
DLG2 - Native Dryland Grass Mix – Summer Mix (September - April)				
<i>Austrodanthonia bipartita</i>	Wallaby Grass	floret	3	
<i>Austrodanthonia caespitosa</i>	Common Wallaby Grass	floret	3	
<i>Austrodanthonia carphoides</i>	Short Wallaby Grass	floret	2	
<i>Austrodanthonia tenuior</i>	Wallaby Grass	floret	2	
<i>Austrostipa bigeniculata</i>	Tall Spear Grass	floret	7	
<i>Austrostipa scabra</i> var. <i>falcata</i>	Slender Spear Grass	floret	9	
<i>Bothriochloa macra</i>	Red Grass	floret	20	
<i>Eragrostis brownii</i>	Brown's Lovegrass	floret	20	
<i>Microlaena stipoides</i>	Weeping Grass	floret	10	
<i>Poa labillardieri</i> var. <i>labillardieri</i>	Tussock	floret	2	
<i>Poa sieberiana</i>	Snowgrass	floret	2	
<i>Themada australis</i>	Kangaroo Grass	floret	20	
Japanese Millet	Cover crop	seed		
DLG2 - Native Dryland Grass Mix – Winter Mix (April - September)				
<i>Austrodanthonia bipartita</i>	Wallaby Grass	floret	6	
<i>Austrodanthonia caespitosa</i>	Common Wallaby Grass	floret	6	
<i>Austrodanthonia carphoides</i>	Short Wallaby Grass	floret	4	
<i>Austrodanthonia tenuior</i>	Wallaby Grass	floret	4	
<i>Austrostipa bigeniculata</i>	Tall Spear Grass	floret	9	
<i>Austrostipa scabra</i> var. <i>falcata</i>	Slender Spear Grass	floret	11	
<i>Bothriochloa macra</i>	Red Grass	floret	10	
<i>Eragrostis brownii</i>	Brown's Lovegrass	floret	10	
<i>Microlaena stipoides</i>	Weeping Grass	floret	20	
<i>Poa labillardieri</i> var. <i>labillardieri</i>	Tussock	floret	4	
<i>Poa sieberiana</i>	Poa Tussock / Snowgrass	floret	4	
<i>Themada australis</i>	Kangaroo Grass	floret	12	
Annual Ryecorn	Cover crop	seed		

Character



Materials



Planting



1 Feature entry sign

2 Grass terracing

3 Turf mounding

4 Pedestrian path

5 Poplar Avenue

6 Corten Steel

7 Plane tree avenue

8 Orientation signage

9 Bench seat

11 *Liquidambar styraciflua* 'Oakville Highlight'

12 *Eucalyptus melliodora*

13 *Chrysocephalum apiculatum*

14 *Stypandra glauca*

15 *Jonquil* 'Mixed Shades'





Neighbourhood 2

Linear Entry Park  
Concept Plan

Key

- 1 Main Entry / Signage / Sculpture
- 2 Weir Walls
- 3 Pedestrian Bridge
- 4 Drainage Channel with boulders, ephemeral planting, pockets of open water
- 5 2m wide concrete pedestrian key path
- 6 Offline bioretention basin
- 7 Gabion terrace walls with planting
- 8 Feature walls
- 9 Ornamental planting
- 10 Substations - Indicative location

Trees

- T1 Liquidambar styraciflua
- T2 Eucalyptus polyanthemos
- T3 Eucalyptus mannifera
- T4 Cedrus deodara
- T5 Malus 'Royal Raindrops'
- T6 Casuarina cunninghamiana

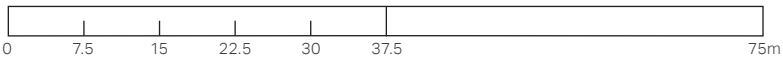
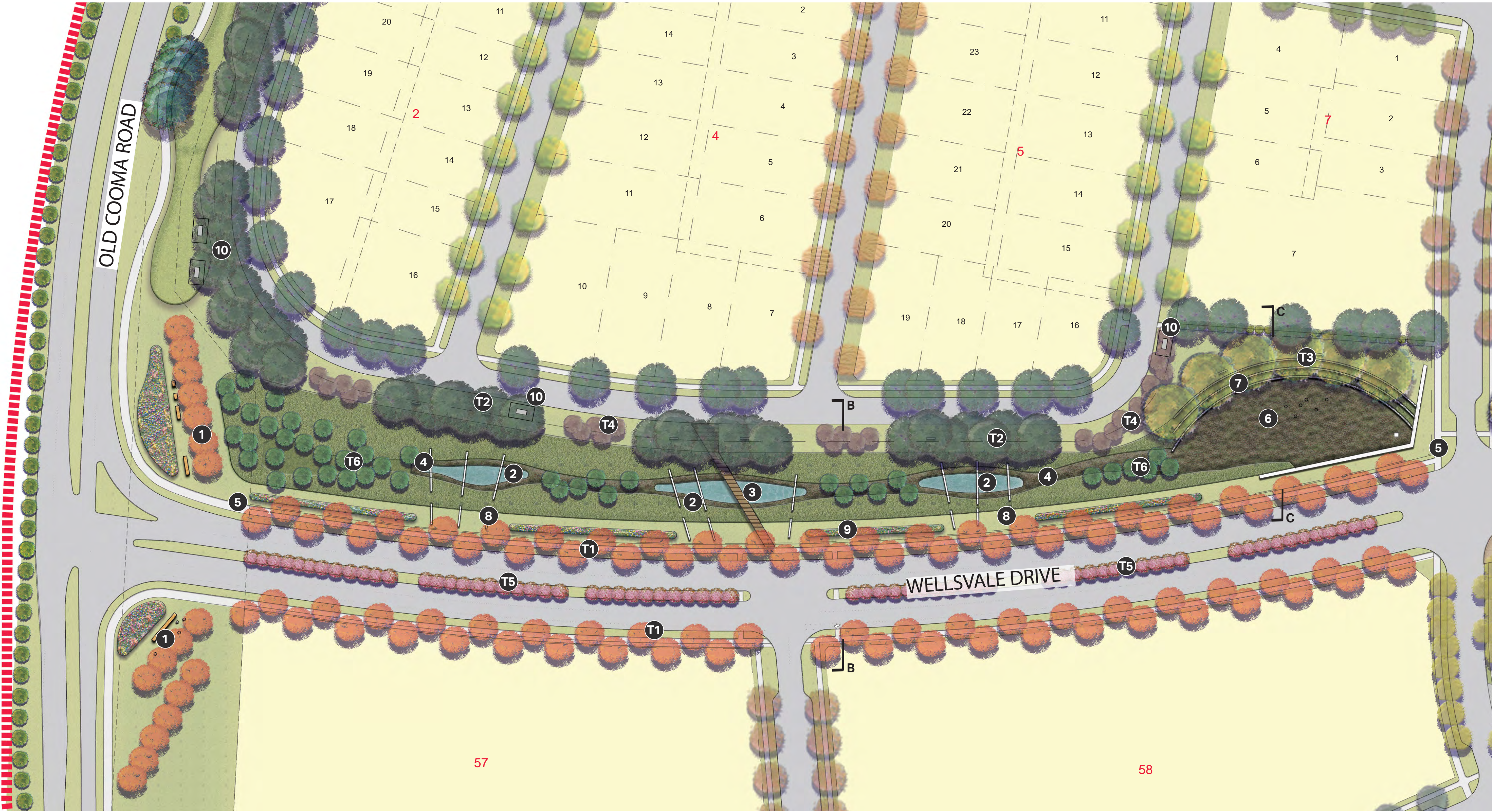
AECOM

G	Development Application	28.09.17	AJ
F	Development Application	22.03.17	JB
E	Development Application	15.03.17	JB
D	Development Application	20.02.17	JB
C	90% Draft - For Review	25.01.17	JB
B	Draft - For Review	12.01.17	JB
A	Draft - For Review	21.12.16	JB
no.	revision	date	initial

Title Googong Neighbourhood 2  
Development Application

Prepared for Googong Township Pty Ltd  
Prepared by AECOM

Date 28.09.17  
Size A1  
Drawing no. L010  
Scale 1:750 @ A1

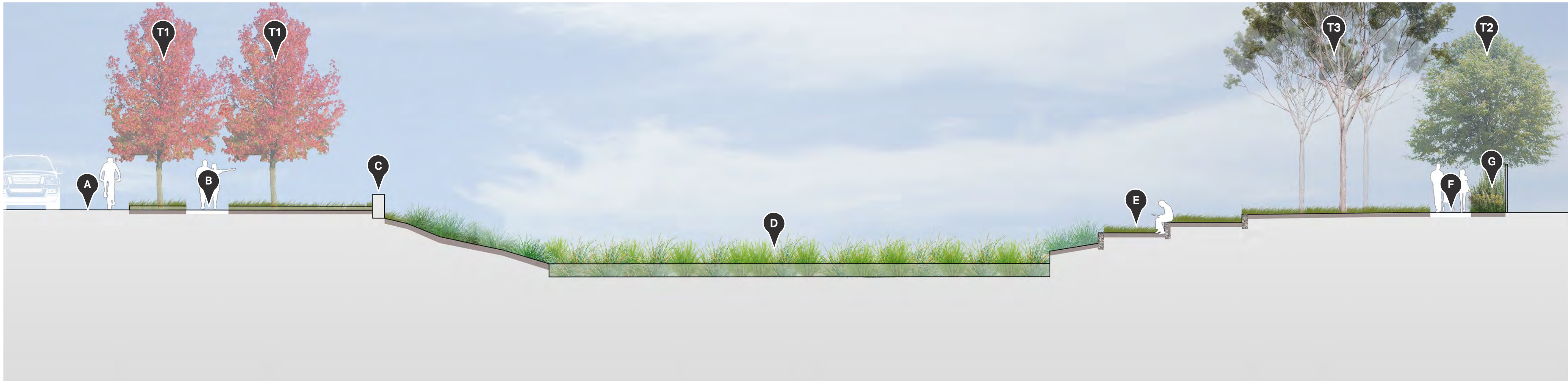






Typical Section B-B: Linear Park 1:100

Key	
<b>A</b>	Road with bike lane
<b>B</b>	Central median with ornamental planting
<b>C</b>	Pedestrian pathway - 2m key path
<b>D</b>	Feature wall
<b>E</b>	Weir wall to create localised ponding
<b>F</b>	Verge
<b>G</b>	Swale with boulders and native planting
<b>H</b>	Feature pedestrian bridge



Typical Section C-C: Bioretention Basin 1:100

Key	
<b>A</b>	Road with bike lane
<b>B</b>	Pedestrian pathway - 2m key path
<b>C</b>	Feature wall/ seat
<b>D</b>	Offline Bioretention Basin
<b>E</b>	Gabion terrace walls with planting
<b>F</b>	Pedestrian pathway - 1.5m
<b>G</b>	Planting against property fence



Neighbourhood 2

Linear Entry Park - Typical Sections

**AECOM**

G	Development Application	28.09.17	AJ
F	Development Application	22.03.17	JB
E	Development Application	15.03.17	JB
D	Development Application	20.02.17	JB
C	90% Draft - For Review	25.01.17	JB
B	Draft - For Review	12.01.17	JB
A	Draft - For Review	21.12.16	JB
no.	revision	date	initial

Title	Googong Neighbourhood 2 Development Application
-------	--

Prepared for	Googong Township Pty Ltd
Prepared by	AECOM

Date	28.09.17
Size	A1
Drawing no.	L011
Scale	1:100@A1